

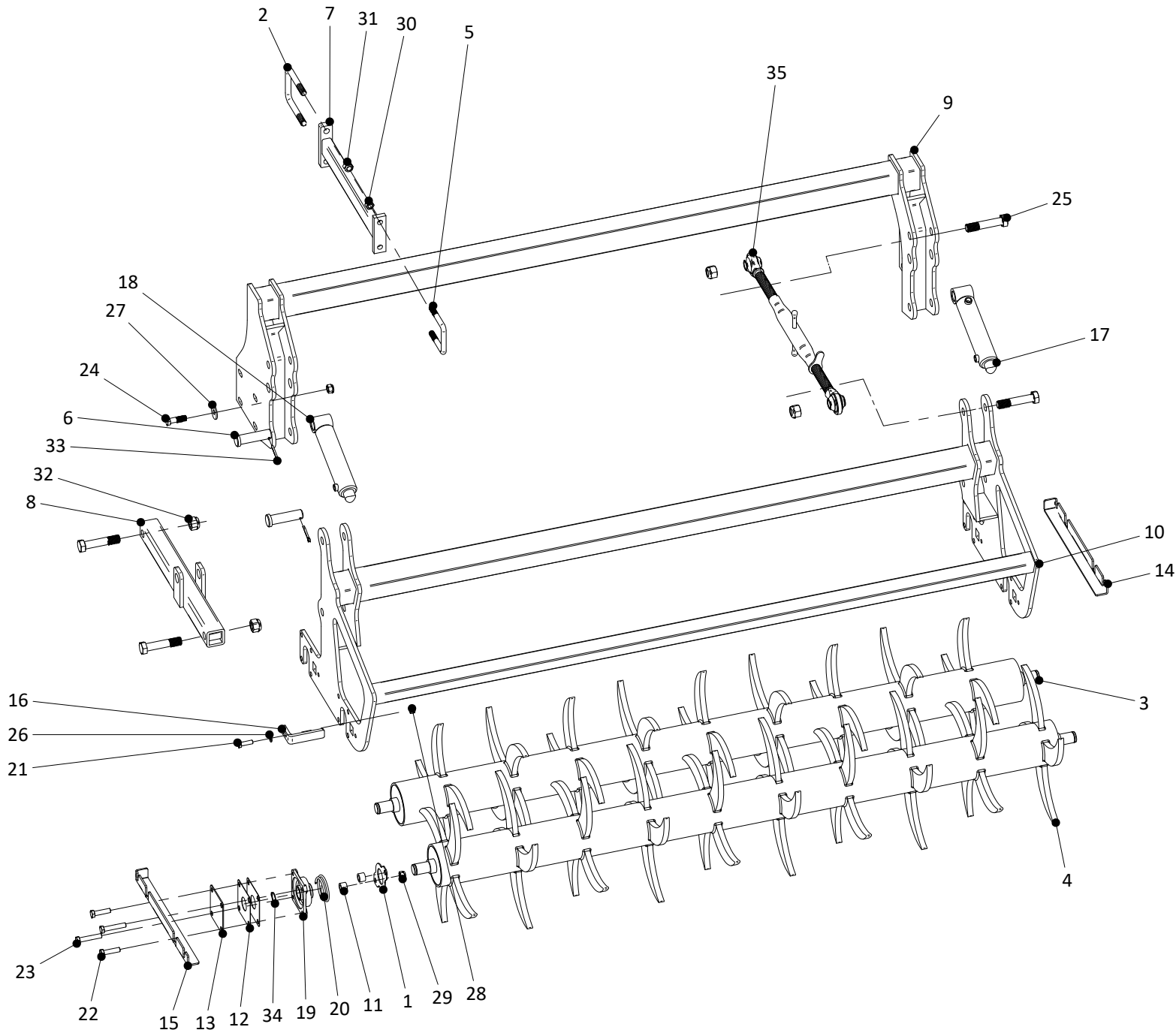
Rullo idraulico/Hydraulic roller RPDI-705

giu-21

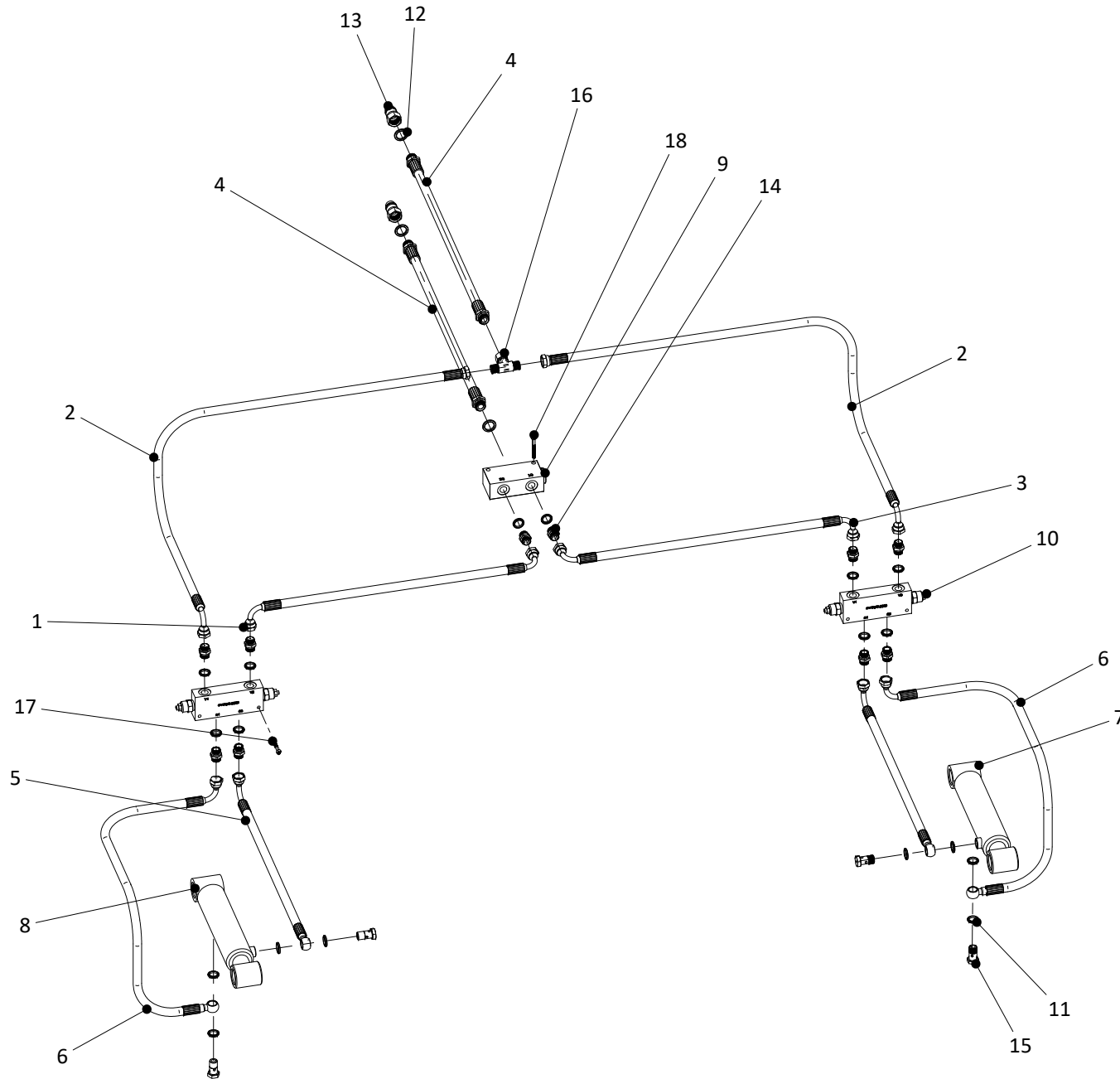
IT Catalogo ricambi

EN Spare parts list





Pos.	Codice Code	Descrizione	Description	Q.tà / Q.ty	Note
1	202473	PROTEZIONE CUSCINETTO	BEARING PROTECTION	4	
2	294181	CAVALLOTTO M18	U BOLT 18 MA	2	
3	294313/A	RULLO ANTERIORE	FRONT ROLLER	1	
4	294313/P	RULLO POSTERIORE	REAR ROLLER	1	
5	294369	CAVALLOTTO M16	U BOLT 16 MA	2	
6	294499	PERNO PISTONE RULLI	CYLINDER PIN	4	
7	294504	TIRANTE 705-707	TIE ROD	2	
8	294518	TUBOLARE ATTACCO PISTONE	ARM	2	
9	294520	TELAIO ANTERIORE RULLO	FRONT FRAME	1	
10	294521	TELAIO POSTERIORE	REAR CHASSIS	1	
11	294729	DISTANZIALE VITE	BOLT SPACER	8	
12	365272	SPESSORE CUSCINETTO	BEARING SPACER	8	
13	365273	TAPPO CUSCINETTO	BEARING PLUG	4	
14	365385	PROTEZIONE A SLITTA DX	RIGHT SLIDE PROTECTION	1	
15	365386	PROTEZIONE A SLITTA SX	LEFT SLIDE PROTECTION	1	
16	365391	RASCHIETTO ESTERNO	EXTERNAL SCRAPER	4	
17	504038/DX	MARTINETTO RULLO DX	RIGHT CYLINDER	1	
18	504038/SX	MARTINETTO RULLO SX	LEFT CYLINDER	1	
19	513586	CUSCINETTO UCF 207	BEARING UCF 207	4	
20	514576	CORDA GRASSA	BRAIDED PACKING	4	
21	520056	VITE UNI 5737 M 12X40	SCREW UNI 5737 M 12X40	4	
22	520076	VITE UNI 5737 M 14X55	SCREW UNI 5737 M 14X55	8	
23	520080	VITE UNI 5737 M 14X75	SCREW UNI 5737 M 14X75	8	
24	520094	VITE UNI 5737 M16X55	SCREW UNI 5737 M16x55	8	
25	520185	VITE UNI 5737 M 24X120	SCREW UNI 5737 M24x120	8	
26	523035	RONDELLA M 12X24X2.5	FLAT WASHER M 12x24x2.5	1	
27	523060	RONDELLA M16X48X4	WASHER M16X48X4	8	
28	524128	DADO AUTOBLOCCANTE UNI 7473 M 12	SELF-LOCKING NUT UNI 7473 M 12	4	
29	524129	DADO AUTOBLOCCANTE UNI 7473 M 14	SELF LOCKING NUT UNI 7473 M 14	16	
30	524130	DADO AUTOBLOCCANTE ALTO UNI 7473 M16	SELF LOCKING HIGH NUT UNI 7473 M 16	12	
31	524131	DADO UNI 7473 M18	SELF-LOCKING NUT UNI 7473 M18	4	
32	524134	DADO AUTOBLOCCANTE UNI 7473 M24	SELF-LOCKING NUT UNI 7473 M 24	8	
33	525051	COPPIGLIA 6X50	COTTER PIN	4	
34	525276	ANELLO SEEGER E 35	SEEGER RING E 35	4	
35	557066	BRACCIO TERZO PUNTO	TOP LINK	2	



Pos.	Codice Code	Descrizione	Description	Q.tà / Q.ty	Note
1	500037	TUBO 3/8 R1 F90°-F90° OR 270° L=550	TUBIFLEX SAE 100 R1AT 3/8 L=550 FEMALE 90°-FEMALE 90°	1	
2	500053	TUBO 3/8 R1 F1/2-F90° L=650	TUBIFLEX SAE 100 R1AT 3/8 L=650 FEMALE 1/2-FEMALE 90°	2	
3	500054	TUBO 3/8 R1 F90°-F90° OR 90° L=550	TUBIFLEX SAE 100 R1AT 3/8 L=550 FEMALE 90°-FEMALE 90°	1	
4	500055	TUBO 3/8 R1 M1/2-M1/2 L=3000	TUBIFLEX SAE 100 R1AT 3/8 L=3000 MALE 1/2-MALE 1/2	2	
5	500060	TUBO 3/8 R1 F90°-O OR 90° L=900	TUBIFLEX SAE 100 R1AT 3/8 L=900 FEMALE 90°-BANJIO	2	
6	500061	TUBO 3/8 R1 F90°-O OR 0° L=800	TUBIFLEX SAE 100 R1AT 3/8 L=800 FEMALE 90°-BANJIO	2	
7	504038/DX	MARTINETTO DESTRO	RIGHT CYLINDER	1	
8	504038/SX	MARTINETTO SINISTRO	LEFT CYLINDER	1	
9	505005	DIVISORE DI FLUSSO	FLOW DIVIDER	1	
10	505037	VALVOLA OVC-DEL-38-02 3/8	DOUBLE OVERCENTRE VALVE	2	
11	506020	RONDELLA BS 3/8"	BS WASHER 3/8"	18	
12	506021	RONDELLA BS 1/2"	BS WASHER 1/2"	3	
13	506100	INNESTO RAPIDO MASCHIO 1/2"	MALE QUICK-RELEASE COUPLING 1/2"	2	
14	506121	NIPPLE 3/8"	NIPPLE 3/8"	10	
15	506153	VITE FORATA 3/8"	PERFORATED SCREW 3/8"	4	
16	506175	T M-F-M 3/8"	MALE-FEMALE-MALE TEE 3/8"	1	
17	522006	VITE UNI 5931 M6x40	SCREW UNI 5931 M6x40	4	
18	522008	VITE UNI 5931 M6x50	SCREW UNI 5931 M6x50	2	



DONDI S.p.A.

Viale Europa, 94-102

06083 Ospedalichio di Bastia Umbra (PG) - ITALY

Telefono : +39-075-8010198

Fax : +39-075-8010387

[http: www.dondinet.it](http://www.dondinet.it)

e-mail : ricambi@dondinet.it
